

# MESOCORE

MODULAR SOLAR HOMES

## WHAT IS MESOCORE? A WHOLE HOUSE IN A BOX!

Mesocore is a **modular house system** that utilizes a **hybrid construction system** using a steel 'core' or chassis mass produced in our factory along with **all the home's electric, solar, and plumbing**. It is **delivered to the building site as a 20-foot container**, which remains, and provides exceptional structural strength. Then, in a fraction of the time of conventional construction, the Mesocore house is **completed on site with local labor and prefabricated components**, all of which are provided in the single weatherproof core delivery.



### MODEL A

IS A HIGH QUALITY, 1130 SQ. FT., 1, 2 OR 3 BEDROOM, 2 BATHS, ONE STORY MODULAR HOME, BUILT ON A PERMANENT FOUNDATION.

## MESOCORE HOUSE ADVANTAGES VS. TRADITIONAL BUILT HOUSE

- **Design, engineering, and construction drawings have been completed** and meets the IBC (International Building Codes)
- **Approved for 180 MPH wind** in high velocity, high impact zones (HVHZ)
- Registered in **Florida DBPR modular home program**
- Mesocore patented mag-board SiPs **exterior wall panels are fire, water, mold and termite proof**
- **Plumbing and electrical completed and tested in factory** - minimal on-site sub work required
- **Variable locations of windows and doors** can accommodate many plan layouts
- **45' x 26' compact footprint**, can be oriented either broadside or narrow side & **can fit on lots as small as 4,000 sq. ft.**
- Can be **completed on-site in as few as 6 weeks**
- **Highly energy efficient house**
- **Core ships directly** to build site
- **Ability for house to adapt to future living needs** - can easily change to a 2 or 3 bedroom house



[mesocore.com](http://mesocore.com)

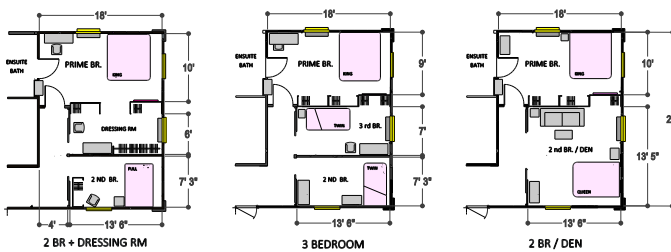
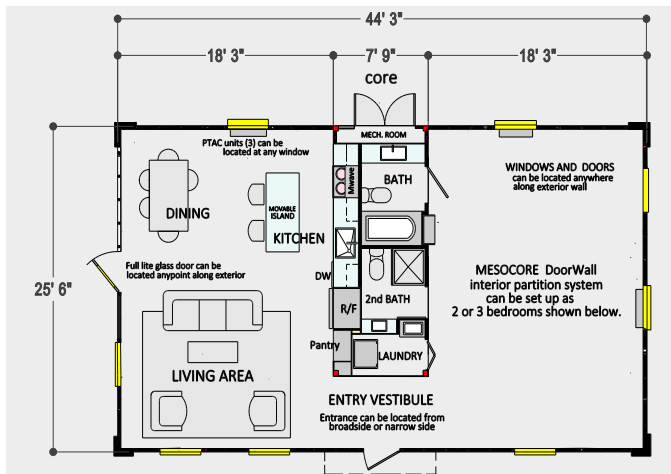
[info@mesocore.com](mailto:info@mesocore.com)

561-601-6910

# MESOCORE

MODULAR SOLAR HOMES

VISIT [MESOCORE.COM](http://MESOCORE.COM) TO VIEW PRICING AND ORDERING INFORMATION!



Mesocore Model A comes in a variety of floorplans to fit your needs, at no additional cost. Mesocore is great for multiple building applications including, in-fill urban lots, new developments seeking to achieve higher density, and disaster replacements that need to be completed quickly.

Mesocore manufactures in Florida. Completed 'core' can be shipped via truck, rail, or ocean freight right to your final build site. Typical lead time in as little as 5 weeks or can be delivered direct from inventory.

## 5 EASY STEPS

- PREPARE LAND → POUR SLAB FOUNDATION
- MESO 'CORE' DELIVERED & COMPLETED
- SITE WORK → MOVE IN!

## HIGHLIGHTED STANDARD FEATURES INCLUDE:

- Solar system with 2kw of solar with all wiring, disconnects and lithium-ion battery back up
- 1,700 gallon rain collection cistern & water purification system
- All plumbing filters, electrical and solar equipment installed in easily accessible mechanical room
- Solar hot water system
- Hurricane rated high efficiency impact windows & Plastpro® doors
- LIOHER® cabinets in kitchen and bathrooms
- Wilsonart THINSCAPE® countertops in kitchen & bathrooms
- Kitchen island
- Kitchen stainless steel sink, dishwasher & above range microwave
- Modern design with open concept space
- 3 PTAC AC/heat pump units keep house comfortable with no ductwork
- Whole house air circulation system with HEPA filter
- All kitchen and bath faucets, toilets, fixtures included
- Unique interior partition system with glass doors and wardrobe cabinetry OR choose customizable layout



[mesocore.com](http://mesocore.com)

[info@mesocore.com](mailto:info@mesocore.com)

561-601-6910